

**Agency Summary And Certification**

**FY 2025 Request**

**Agency:** Racing Commission

332

In accordance with 67-3502 Idaho Code, I certify the included budget properly states the receipts and expenditures of the departments (agency, office, or institution) for the fiscal years indicated.

**Signature of Department Director:**

Kedrick Wills

**Date:** 09/01/2023

			<b>FY 2023 Total Appropriation</b>	<b>FY 2023 Total Expenditures</b>	<b>FY 2024 Original Appropriation</b>	<b>FY 2024 Estimated Expenditures</b>	<b>FY 2025 Total Request</b>
<b>Appropriation Unit</b>							
Racing Commission			437,800	338,500	472,400	472,400	474,800
<b>Total</b>			<b>437,800</b>	<b>338,500</b>	<b>472,400</b>	<b>472,400</b>	<b>474,800</b>
<b>By Fund Source</b>							
D	22900	Dedicated	407,800	337,100	442,400	442,400	444,800
D	48500	Dedicated	30,000	1,400	30,000	30,000	30,000
<b>Total</b>			<b>437,800</b>	<b>338,500</b>	<b>472,400</b>	<b>472,400</b>	<b>474,800</b>
<b>By Account Category</b>							
Personnel Cost			268,800	203,400	282,500	282,500	284,900
Operating Expense			139,000	133,700	159,900	159,900	159,900
Trustee/Benefit			30,000	1,400	30,000	30,000	30,000
<b>Total</b>			<b>437,800</b>	<b>338,500</b>	<b>472,400</b>	<b>472,400</b>	<b>474,800</b>
FTP Positions			3	3	3	3	3
<b>Total</b>			<b>3</b>	<b>3</b>	<b>3</b>	<b>3</b>	<b>3</b>

**Division Description**

**Request for Fiscal Year:** 2025

**Agency:** Racing Commission

332

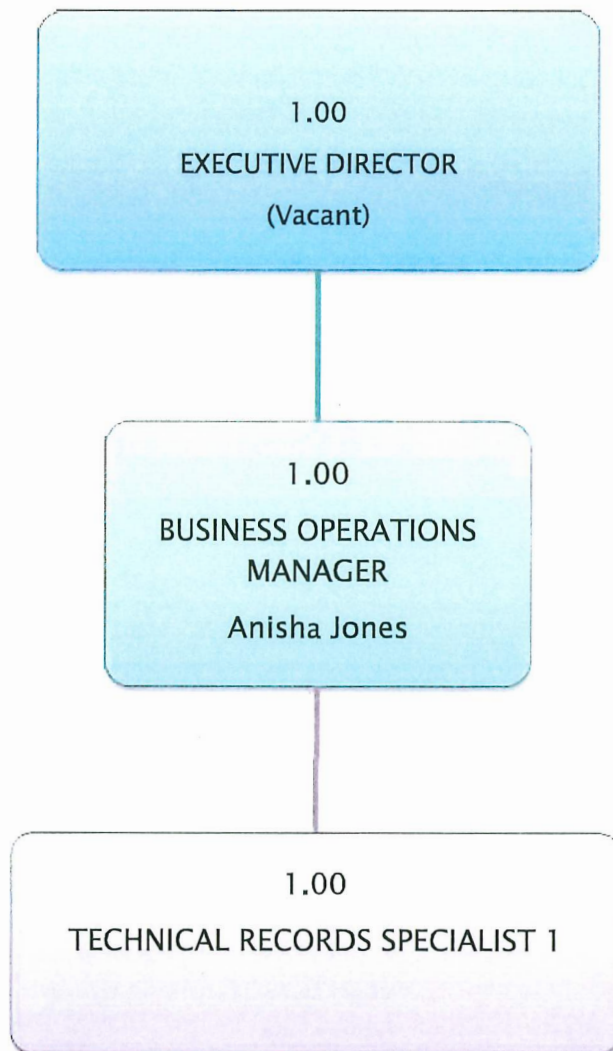
**Division:** Racing Commission

RC1

**Statutory Authority:** Idaho Code 54-2507

The Racing Commission maintains horse racing requirements that protect racing participants and the public from illegal actions surrounding racing operations. The commission appoints a director and a business operations manager to perform the year-round operations as well as state stewards, veterinarians, mutuel inspectors, and licensing clerks during the racing season to ensure the honest operation of the pari-mutuel system and compliance with the Idaho Racing Act [Statutory Authority: Section 54-2507, Idaho Code].

Idaho State Police  
Racing Commission



- Vacancy count as of 8/8/23

		FTP	Personnel Costs	Operating Expense	Capital Outlay	Trustee Benefit	Total
<b>Agency</b>	Racing Commission						332
<b>Division</b>	Racing Commission						RC1
<b>Appropriation Unit</b>	Racing Commission						LEAG
<b>FY 2023 Total Appropriation</b>							
1.00	FY 2023 Total Appropriation						LEAG
	H0359						
	22900 Dedicated	3.00	268,800	139,000	0	0	407,800
	48500 Dedicated	0.00	0	0	0	30,000	30,000
		3.00	268,800	139,000	0	30,000	437,800
1.61	Reverted Appropriation Balances						LEAG
	FY Reverted Appropriation						
	22900 Dedicated	0.00	(65,400)	(5,300)	0	0	(70,700)
	48500 Dedicated	0.00	0	0	0	(28,600)	(28,600)
		0.00	(65,400)	(5,300)	0	(28,600)	(99,300)
<b>FY 2023 Actual Expenditures</b>							
2.00	FY 2023 Actual Expenditures						LEAG
	22900 Dedicated	3.00	203,400	133,700	0	0	337,100
	48500 Dedicated	0.00	0	0	0	1,400	1,400
		3.00	203,400	133,700	0	1,400	338,500
<b>FY 2024 Original Appropriation</b>							
3.00	FY 2024 Original Appropriation						LEAG
	22900 Dedicated	3.00	282,500	159,900	0	0	442,400
	48500 Dedicated	0.00	0	0	0	30,000	30,000
		3.00	282,500	159,900	0	30,000	472,400
<b>FY 2024 Total Appropriation</b>							
5.00	FY 2024 Total Appropriation						LEAG
	22900 Dedicated	3.00	282,500	159,900	0	0	442,400
	48500 Dedicated	0.00	0	0	0	30,000	30,000
		3.00	282,500	159,900	0	30,000	472,400
<b>FY 2024 Estimated Expenditures</b>							
7.00	FY 2024 Estimated Expenditures						LEAG
	22900 Dedicated	3.00	282,500	159,900	0	0	442,400
	48500 Dedicated	0.00	0	0	0	30,000	30,000
		3.00	282,500	159,900	0	30,000	472,400
<b>FY 2025 Base</b>							
9.00	FY 2025 Base						LEAG
	22900 Dedicated	3.00	282,500	159,900	0	0	442,400
	48500 Dedicated	0.00	0	0	0	30,000	30,000

		FTP	Personnel Costs	Operating Expense	Capital Outlay	Trustee Benefit	Total
		3.00	282,500	159,900	0	30,000	472,400
<b>Program Maintenance</b>							
10.11	Change in Health Benefit Costs						LEAG
	Change in Health Benefit Costs						
	22900 Dedicated	0.00	700	0	0	0	700
		0.00	700	0	0	0	700
10.12	Change in Variable Benefit Costs						LEAG
	Change in Variable Benefit Costs						
	22900 Dedicated	0.00	500	0	0	0	500
		0.00	500	0	0	0	500
10.61	Salary Multiplier - Regular Employees						LEAG
	Salary Multiplier-Regular Employees						
	22900 Dedicated	0.00	1,200	0	0	0	1,200
		0.00	1,200	0	0	0	1,200
<b>FY 2025 Total Maintenance</b>							
11.00	FY 2025 Total Maintenance						LEAG
	22900 Dedicated	3.00	284,900	159,900	0	0	444,800
	48500 Dedicated	0.00	0	0	0	30,000	30,000
		3.00	284,900	159,900	0	30,000	474,800
<b>FY 2025 Total</b>							
13.00	FY 2025 Total						LEAG
	22900 Dedicated	3.00	284,900	159,900	0	0	444,800
	48500 Dedicated	0.00	0	0	0	30,000	30,000
		3.00	284,900	159,900	0	30,000	474,800

		FY 21 Actuals	FY 22 Actuals	FY 23 Actuals	FY 24 Estimated Revenue	FY 25 Estimated Revenue	Significant Assumptions
<b>Fund 22900</b>	<b>State Regulatory Funds</b>						
410	License, Permits & Fees	72,500	70,600	64,705	69,000	69,000	
433	Fines, Forfeit & Escheats	600	1,700	2,200	1,500	1,500	
470	Other Revenue	230,800	228,800	238,499	232,700	232,700	
	<b>State Regulatory Funds Total</b>	<b>303,900</b>	<b>301,100</b>	<b>305,404</b>	<b>303,200</b>	<b>303,200</b>	
<b>Fund 48100</b>	<b>Income Funds</b>						
410	License, Permits & Fees	7,000	9,000	6,501	7,000	7,000	
470	Other Revenue	62,200	61,400	56,159	59,000	59,000	
	<b>Income Funds Total</b>	<b>69,200</b>	<b>70,400</b>	<b>62,660</b>	<b>66,000</b>	<b>66,000</b>	
<b>Fund 48501</b>	<b>Pari-Mutuel Dist Fund: Track Distrib Acct (Small Track)</b>						
410	License, Permits & Fees	0	100	64,296	0	0	
	<b>Pari-Mutuel Dist Fund: Track Distrib Acct (Small Track) Total</b>	<b>0</b>	<b>100</b>	<b>64,296</b>	<b>0</b>	<b>0</b>	
<b>Fund 48504</b>	<b>Pari-Mutuel Dist Fund: Kootenai-Greyhound Simulcasting</b>						
470	Other Revenue	1,600	1,200	1,168	1,200	1,200	
	<b>Pari-Mutuel Dist Fund: Kootenai-Greyhound Simulcasting Total</b>	<b>1,600</b>	<b>1,200</b>	<b>1,168</b>	<b>1,200</b>	<b>1,200</b>	
<b>Fund 48505</b>	<b>Pari-Mutuel Dist Fund: Breeder/Owner-Greyhound Simulcasting</b>						
470	Other Revenue	800	600	584	600	600	
	<b>Pari-Mutuel Dist Fund: Breeder/Owner-Greyhound Simulcasting Total</b>	<b>800</b>	<b>600</b>	<b>584</b>	<b>600</b>	<b>600</b>	
	<b>Agency Name Total</b>	<b>375,500</b>	<b>373,400</b>	<b>434,112</b>	<b>371,000</b>	<b>371,000</b>	

**Analysis of Fund Balances**

**Request for Fiscal Year: 2025**

**Agency:** Racing Commission

332

**Fund:** State Regulatory Funds

22900

**Sources and Uses:**

E. Licensee conducting the pari-mutuel system for live or simulcast horse races shall distribute 1.25% of gross daily receipts and 0.75% of exotic wagers to the Racing Commission Fund, in accordance with §54-2513. Each licensee conducting the pari-mutuel system for historical horse races shall distribute 0.50% of gross daily receipts to the Racing Commission Fund in accordance with §54-2512A. In addition, each individual participating at any race meet must secure a license from the commission. The license fees are set by the commission per §54-2506. The budget system fund detail 0229-06 is used to denote the Idaho State Racing Commission Fund.

	<b>FY 21 Actuals</b>	<b>FY 22 Actuals</b>	<b>FY 23 Actuals</b>	<b>FY 24 Estimate</b>	<b>FY 25 Estimate</b>
<b>01. Beginning Free Fund Balance</b>	<b>165,500</b>	<b>259,500</b>	<b>228,700</b>	<b>197,305</b>	<b>128,105</b>
02. Encumbrances as of July 1	0	0	0	0	0
02a. Reappropriation (Legislative Carryover)	0	0	0	0	0
<b>03. Beginning Cash Balance</b>	<b>165,500</b>	<b>259,500</b>	<b>228,700</b>	<b>197,305</b>	<b>128,105</b>
04. Revenues (from Form B-11)	303,900	301,100	305,404	303,200	303,200
05. Non-Revenue Receipts and Other Adjustments	700	600	(17)	0	0
06. Statutory Transfers In	0	0	0	0	0
07. Operating Transfers In	0	0	0	0	0
<b>08. Total Available for Year</b>	<b>470,100</b>	<b>561,200</b>	<b>534,087</b>	<b>500,505</b>	<b>431,305</b>
09. Statutory Transfers Out	0	0	0	0	0
10. Operating Transfers Out	0	0	0	0	0
11. Non-Expenditure Distributions and Other Adjustments	100	1,600	(271)	0	0
12. Cash Expenditures for Prior Year Encumbrances	0	0	0	0	0
13. Original Appropriation	390,100	398,700	407,800	442,400	444,800
Prior Year Reappropriations, Supplementals, Recessions	0	0	0	0	0
15. Non-cogs, Receipts to Appropriations, etc.	0	0	0	0	0
16. Reversions and Continuous Appropriations	(179,600)	(67,800)	(70,747)	(70,000)	(70,000)
17. Current Year Reappropriation	0	0	0	0	0
18. Reserve for Current Year Encumbrances	0	0	0	0	0
<b>19. Current Year Cash Expenditures</b>	<b>210,500</b>	<b>330,900</b>	<b>337,053</b>	<b>372,400</b>	<b>374,800</b>
<b>19a. Budgetary Basis Expenditures (CY Cash Exp + CY Enc)</b>	<b>210,500</b>	<b>330,900</b>	<b>337,053</b>	<b>372,400</b>	<b>374,800</b>
<b>20. Ending Cash Balance</b>	<b>259,500</b>	<b>228,700</b>	<b>197,305</b>	<b>128,105</b>	<b>56,505</b>
21. Prior Year Encumbrances as of June 30	0	0	0	0	0
22. Current Year Encumbrances as of June 30	0	0	0	0	0
22a. Current Year Reappropriation	0	0	0	0	0
23. Borrowing Limit	0	0	0	0	0
<b>24. Ending Free Fund Balance</b>	<b>259,500</b>	<b>228,700</b>	<b>197,305</b>	<b>128,105</b>	<b>56,505</b>
<b>24a. Investments Direct by Agency (GL 1203)</b>	<b>0</b>	<b>0</b>	<b>0</b>	<b>0</b>	<b>0</b>
<b>24b. Ending Free Fund Balance Including Direct Investments</b>	<b>259,500</b>	<b>228,700</b>	<b>197,305</b>	<b>128,105</b>	<b>56,505</b>
<b>26. Outstanding Loans (if this fund is part of a loan program)</b>	<b>0</b>	<b>0</b>	<b>0</b>	<b>0</b>	<b>0</b>

Note:

**Analysis of Fund Balances**

Request for Fiscal Year: 2025

Agency: Racing Commission

332

Fund: Pari-Mutuel Distribution Fund

48500

Sources and Uses:

TRACK DISTRIBUTION/A.K.A. SMALL TRACK FUND: Moneys in this fund detail come from one-half of one percent from the pari-mutuel system for live horse races and five percent from the advance deposit wagering account. All moneys are appropriated to the commission  
 TRACK DISTRIBUTION/A.K.A. SMALL TRACK FUND: Recipient horse racing tracks shall be those which, during the race meet year of distribution, have an average daily handle of less than \$60,000.

	FY 21 Actuals	FY 22 Actuals	FY 23 Actuals	FY 24 Estimate	FY 25 Estimate
<b>01. Beginning Free Fund Balance</b>	<b>1,200</b>	<b>1,100</b>	<b>600</b>	<b>977</b>	<b>1,277</b>
02. Encumbrances as of July 1	0	0	0	0	0
02a. Reappropriation (Legislative Carryover)	0	0	0	0	0
<b>03. Beginning Cash Balance</b>	<b>1,200</b>	<b>1,100</b>	<b>600</b>	<b>977</b>	<b>1,277</b>
04. Revenues (from Form B-11)	2,400	1,800	1,800	1,800	1,800
05. Non-Revenue Receipts and Other Adjustments	0	0	0	0	0
06. Statutory Transfers In	0	0	0	0	0
07. Operating Transfers In	0	0	0	0	0
<b>08. Total Available for Year</b>	<b>3,600</b>	<b>2,900</b>	<b>2,400</b>	<b>2,777</b>	<b>3,077</b>
09. Statutory Transfers Out	0	0	0	0	0
10. Operating Transfers Out	0	0	0	0	0
11. Non-Expenditure Distributions and Other Adjustments	0	0	0	0	0
12. Cash Expenditures for Prior Year Encumbrances	0	0	0	0	0
13. Original Appropriation	30,000	30,000	30,000	30,000	30,000
14. Prior Year Reappropriations, Supplementals, Recessions	0	0	0	0	0
15. Non-cogs, Receipts to Appropriations, etc.	0	0	0	0	0
16. Reversions and Continuous Appropriations	(27,500)	(27,700)	(28,577)	(28,500)	(28,500)
17. Current Year Reappropriation	0	0	0	0	0
18. Reserve for Current Year Encumbrances	0	0	0	0	0
<b>19. Current Year Cash Expenditures</b>	<b>2,500</b>	<b>2,300</b>	<b>1,423</b>	<b>1,500</b>	<b>1,500</b>
<b>19a. Budgetary Basis Expenditures (CY Cash Exp + CY Enc)</b>	<b>2,500</b>	<b>2,300</b>	<b>1,423</b>	<b>1,500</b>	<b>1,500</b>
<b>20. Ending Cash Balance</b>	<b>1,100</b>	<b>600</b>	<b>977</b>	<b>1,277</b>	<b>1,577</b>
21. Prior Year Encumbrances as of June 30	0	0	0	0	0
22. Current Year Encumbrances as of June 30	0	0	0	0	0
22a. Current Year Reappropriation	0	0	0	0	0
23. Borrowing Limit	0	0	0	0	0
<b>24. Ending Free Fund Balance</b>	<b>1,100</b>	<b>600</b>	<b>977</b>	<b>1,277</b>	<b>1,577</b>
24a. Investments Direct by Agency (GL 1203)	0	0	0	0	0
<b>24b. Ending Free Fund Balance Including Direct Investments</b>	<b>1,100</b>	<b>600</b>	<b>977</b>	<b>1,277</b>	<b>1,577</b>
<b>26. Outstanding Loans (if this fund is part of a loan program)</b>	<b>0</b>	<b>0</b>	<b>0</b>	<b>0</b>	<b>0</b>

Note:



**PCF Summary Report**

Request for Fiscal Year: 2025

Agency: Racing Commission

332

Appropriation Unit: Racing Commission

LEAG

Fund: State Regulatory Funds

22900

DU		FTP	Salary	Health	Variable Benefits	Total
3.00	FY 2024 ORIGINAL APPROPRIATION	3.00	199,027	41,250	42,223	282,500
5.00	FY 2024 TOTAL APPROPRIATION	3.00	199,027	41,250	42,223	282,500
7.00	FY 2024 ESTIMATED EXPENDITURES	3.00	199,027	41,250	42,223	282,500
9.00	FY 2025 BASE	3.00	199,027	41,250	42,223	282,500
10.11	Change in Health Benefit Costs	0.00	0	700	0	700
10.12	Change in Variable Benefit Costs	0.00	0	0	500	500
10.61	Salary Multiplier - Regular Employees	0.00	1,000	0	200	1,200
11.00	FY 2025 PROGRAM MAINTENANCE	3.00	200,027	41,950	42,923	284,900
13.00	FY 2025 TOTAL REQUEST	3.00	200,027	41,950	42,923	284,900

**PCF Detail Report**

Request for Fiscal Year: 2025

Agency: Racing Commission

332

Appropriation Unit: Racing Commission

LEAG

Fund: State Regulatory Funds

22900

PCN	Class	Description	FTP	Salary	Health	Variable Benefits	Total
<b>Totals from Personnel Cost Forecast (PCF)</b>							
		Permanent Positions	1.00	61,880	13,750	14,023	89,653
		Total from PCF	1.00	61,880	13,750	14,023	89,653
		<b>FY 2024 ORIGINAL APPROPRIATION</b>	<b>3.00</b>	<b>199,027</b>	<b>41,250</b>	<b>42,223</b>	<b>282,500</b>
		<b>Unadjusted Over or (Under) Funded:</b>	<b>2.00</b>	<b>137,147</b>	<b>27,500</b>	<b>28,200</b>	<b>192,847</b>
<b>Adjustments to Wage and Salary</b>							
332001 5631	178C R90	Technical Records Specialist 1 8720	1.00	35,360	0	8,013	43,373
NEWP- 147949	90000 NE	GROUP POSITION , Std Benefits/No Ret/No Health	.00	36,773	0	3,221	39,994
NEWP- 674662	90000 NE	GROUP POSITION , Std Benefits/No Ret/No Health	.00	150	0	13	163
NEWP- 693985	90000 NE	GROUP POSITION , Std Benefits/No Ret/No Health	.00	12,528	0	1,097	13,625
NEWP- 706504	90000 NE	GROUP POSITION , Std Benefits/No Ret/No Health	.00	19,760	0	1,731	21,491
<b>Estimated Salary Needs</b>							
		Board, Group, & Missing Positions	.00	69,211	0	6,062	75,273
		Permanent Positions	2.00	97,240	13,750	22,036	133,026
		<b>Estimated Salary and Benefits</b>	<b>2.00</b>	<b>166,451</b>	<b>13,750</b>	<b>28,098</b>	<b>208,299</b>
<b>Adjusted Over or (Under) Funding</b>							
		<b>Original Appropriation</b>	<b>1.00</b>	<b>32,576</b>	<b>27,500</b>	<b>14,125</b>	<b>74,201</b>
		<b>Estimated Expenditures</b>	<b>1.00</b>	<b>32,576</b>	<b>27,500</b>	<b>14,125</b>	<b>74,201</b>
		<b>Base</b>	<b>1.00</b>	<b>32,576</b>	<b>27,500</b>	<b>14,125</b>	<b>74,201</b>

## Part I – Agency Profile

### Agency Overview

The Idaho State Racing Commission was created to enhance, promote and protect the live race industry in the state of Idaho. Our mission is accomplished through licensing; regulations and supervision of all live and simulcast race meets in this state under the terms of the Horse Racing Act, *Idaho Code*, Title 54, Chapter 25.

The Racing Commission is comprised of three members appointed by the Governor and confirmed by the Senate for six-year terms. The Executive Director is appointed by the Director of Idaho State Police, who then in turn hires and manages the office staff and part-time regulatory personnel, under the direction of the Idaho State Police. Since February of 2015 the commission has been without an Executive Director. Remaining employees are 2 full time administration persons, (1) seasonal part-time licensing clerk, and (3) three part-time seasonal stewards to perform the day-to-day operations. The Racing Commission’s office is located in Meridian at the Idaho State Police facility. A small satellite office was opened in Blackfoot in late 2021 to better serve the industry as most live horse racing occurs in the southeastern part of our state.

Commission Members:

- Chairman Nikeela Abrams
- Commissioner Scot Ludwig
- Commissioner Matthew Woodington

ISP Director:

- Colonel Kedrick Wills

The Idaho State Racing Commission is a dedicated fund agency with its revenue coming from a percentage of the pari-mutuel handle, licensing fees and fines. Revenue is driven by the industry.

Revenues for the Commission have been very low in the past several years due to the closure of the largest track located in the heaviest populated area of the state. During the 2021 regular session of the 65<sup>th</sup> Idaho Legislature, SB1178 was brought forward by the industry as a way to better fund the Commission. This change amended existing law to provide for a retention of a percentage of advance deposit wagering monies by the Idaho State Racing Commission for racing administration. The legislation passed and was signed by the Governor on May 5<sup>th</sup>, 2021. The industry continues discussions on other possible revenue streams which will help continue to fund this long held tradition in Idaho alive.

### Core Functions/Idaho Code

The Idaho State Racing Commission has authority to prepare and promulgate a complete set of rules and regulations to govern race meets in order to ensure the individuals who participate at race meets will act in the best interest of racing. It is the duty of the Racing Commission to license, regulate, and supervise all race meets held in this state. (Title 54, Chapter 25, *Idaho Code*)

### Revenue and Expenditures

Revenue	FY 2020	FY 2021	FY 2022	FY 2023
Racing Commission	\$130,500	\$303,900	\$299,400	\$305,400
Pari-mutuel Distributions \$	<u>\$2,400</u>	<u>\$2,400</u>	<u>\$1,700</u>	<u>\$1,700</u>
<b>Total</b>	<b>\$132,900</b>	<b>\$306,300</b>	<b>\$301,100</b>	<b>\$307,100</b>

<b>Expenditures</b>	<b>FY 2020</b>	<b>FY 2021</b>	<b>FY 2022</b>	<b>FY 2023</b>
Personnel Costs	\$137,400	\$132,500	\$187,600	\$203,300
Operating Expenditures	\$95,600	\$78,000	\$143,300	\$133,700
Capital Outlay	\$0	\$0.00	\$0	\$0
Trustee/Benefit Payments	\$2,400	\$2,500	\$2,300	\$1,400
<b>Total</b>	<b>\$235,400</b>	<b>\$213,000</b>	<b>\$333,200</b>	<b>\$338,400</b>

**Profile of Cases Managed and/or Key Services Provided**

<b>Cases Managed and/or Key Services Provided</b>	<b>FY 2020</b>	<b>FY 2021</b>	<b>FY 2022</b>	<b>FY 2023</b>
Occupational Licenses	\$45,849	\$61,434	\$61,188	\$54,614
Fines	\$2,100	\$1,050	\$1,600	\$2,200

**Part II – Performance Measures**

<b>Maintain the Integrity of Horse Racing in Idaho</b>						
<b><u>Objective 1.1 – Safety:</u></b>  <b><u>Performance Measure:</u></b> While performing a comprehensive inspection for pari-mutuel racetracks, the Commission seeks to ensure the facilities at the racetracks and the operations comply fully with the statutes and rules of the Commission. Reports are provided to the Racing Association personnel as well as the Idaho State Racing Commission Personal for review/and suggestions.	actual	100%	100%	100%	100%	
	target	100%	100%	100%	100%	
<b><u>Objective 1.2 – Owners and Trainers:</u></b>  <b><u>Performance Measure:</u></b> Any licensees providing false information on their application may have their license suspended or revoked and could be fined by the Commission. Commission staff meets with licensees to interview and document pertinent information regarding licensee.	actual	100%	100%	100%	100%	
	target	100%	100%	100%	100%	
<b><u>Objective 1.3 – Race Meet</u></b>  <b><u>Performance Measures:</u></b> 1. Jockeys must have a physical performed prior to being licensed and must provide a doctor's release after any incident. Jockey's will provide the required documentation to the Racing Commission prior to racing.	actual	100%	100%	100%	100%	
	target	100%	100%	100%	100%	

<p>2. Horses and jockeys will submit to urine and blood tests as required by the State Vet or the Board of Stewards.</p> <p>3. Horses are free from any forbidden medication or drugs prior to races.</p> <p>4. All races are monitored by State Stewards and are recorded for the fair and equitable treatment of all parties and are scrutinized to identify any possible illegal practices.</p>						
<p><b>Objective 1.4 – Rules</b></p>	<p>actual</p>	<p>100%</p>	<p>100%</p>	<p>100%</p>	<p>100%</p>	
<p><b>Performance Measure:</b> Investigate all rule infractions and sanction penalties as required for violations. Continually review IDAPA rules for improvement/updates.</p>	<p>target</p>	<p>100%</p>	<p>100%</p>	<p>100%</p>	<p>100%</p>	
<p align="center"><b>PROMOTE CLEAR COMMUNICATION WITH THE PUBLIC</b></p>						
<p><b>Objective 2.1: <u>Develop and present a unified, well-organized image to the public. Continue to provide the public with opportunities for input regarding the integrity of rule enforcement at Commission meetings, as well as participating in other opportunities to interact with horseman’s groups, tracks and breed associations as needed.</u></b></p> <p><b>Performance Measure:</b> The Commission holds quarterly and special open meetings for the public to attend. All meetings are made available to attend virtually as well as posted on the Commission website and Town Hall Idaho. At quarterly Commission meetings, PUBLIC COMMENTS regarding items on the agenda is added to encourage input from racing industry.</p>	<p>actual</p>	<p>100%</p>	<p>100%</p>	<p>100%</p>	<p>100%</p>	
	<p>target</p>	<p>100%</p>	<p>100%</p>	<p>100%</p>	<p>100%</p>	
<p align="center"><b>CHART THE FINANCIAL FUTURE OF THE IDAHO STATE RACING COMMISSION.</b></p>						
<p><b>Objective 3.1: <u>Operate the Idaho State Racing Commission in the most cost-effective manner.</u></b></p>	<p>actual</p>	<p>100%</p>	<p>100%</p>	<p>100%</p>	<p>100%</p>	
<p><b>Performance Measure:</b> The Commission Office located in Meridian has downsized in office space and opened a small office on the Eastern side of the state to be more available to horsemen and closer to the racetracks, as we run mostly all races in Southeastern Idaho.</p>	<p>target</p>	<p>100%</p>	<p>100%</p>	<p>100%</p>	<p>100%</p>	

<b>Objective 3.2: Cyber Security Executive Order No. 2017-2</b>  <b>Performance Measure:</b> Yearly, the Commission Staff participates in Cyber Security Trainings. Currently there are two full-time employees. Idaho State Racing Commission employees have access to computers both in the office and out in the field. The Commission employees use these computers to data enter Occupational Licenses. These computers are used as a "stand alone" and are not at any time joined into the ISP network. All employees working in the Commission Office are required to take the online training provided by Human Resources yearly as well as ISP's required training.	actual	100%	100%	100%	100%	
	target	100%	100%	100%	100%	
<b>Objective 3.3: Licensing Freedom Act of 2019</b>  <b>Performance Measure:</b> The Commission struggles from time to time with revenue. During a past Legislative session, a simple change to the ADW distribution was passed and is helping stabilize the Commission funding issue much. The horse industry continues to look at other states funding sources to see if there may possibly be other funding avenues to pursue.	actual	100%	100%	100%	100%	
	target	100%	100%	100%	100%	

**For More Information Contact**

Anisha Jones  
 Racing Commission  
 291 North Broadway Street      and      700 Stratford Dr  
 Blackfoot, ID 83221      Meridian, ID 83642  
 Phone O: (208) 884-7080 C : (208) 954-6830  
 E-mail: [anisha.jones@isp.idaho.gov](mailto:anisha.jones@isp.idaho.gov)

## ***Director Attestation for Performance Report***

---

In accordance with *Idaho Code* 67-1904, I certify the data provided in the Performance Report has been internally assessed for accuracy, and, to the best of my knowledge, is deemed to be accurate.

Department: Idaho State Racing Commission

  
\_\_\_\_\_  
Director's Signature

9/1/2023  
\_\_\_\_\_  
Date

Please return to:

Division of Financial Management  
304 N. 8<sup>th</sup> Street, 3<sup>rd</sup> Floor  
Boise, Idaho 83720-0032

FAX: 334-2438  
E-mail: [info@dfm.idaho.gov](mailto:info@dfm.idaho.gov)